

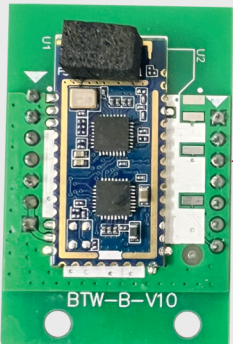


# SOL801

POS Printer



Bluetooth PCB



Wi-Fi PCB



Field Upgradeable to  
Bluetooth or Wi-Fi by Inserting  
above Memory Card Size PCB

- ▷ Piano Finish Top Cover
- ▷ Upgradeable to Wi-Fi or Bluetooth by a Memory Card Size PCB
- ▷ Logo Download & Printing
- ▷ Multiple Interfaces option
  - ▷ USB, USB+LAN, USB+LAN+RS232
  - ▷ USB+LAN+VOICE
  - ▷ USB+LAN+Bluetooth
  - ▷ USB+LAN+Wi-Fi
- ▷ Print head life up to 150km
- ▷ Cutter life up to 1million cuts
- ▷ Buzzer for Print confirmation
- ▷ Wall Mounting Holes
- ▷ Spindle for Paper Roll Holder
- ▷ 58mm paper Shaft included

# Specifications

<b>Printing Method</b>	Thermal Line
<b>Resolution</b>	8dots/mm, 576dots/line
<b>Paper Type</b>	Thermal paper
<b>Paper Width</b>	79.5± 0.5mm
<b>Paper Thickness</b>	0.06 to 0.08mm
<b>Paper Roll Diameter</b>	Max. 80mm
<b>Auto Cutter</b>	Partial Cut
<b>Effective Printing Width</b>	72mm
<b>Printing Speed</b>	250mm/s
<b>Character Set</b>	ASCII, GB18030(Chinese),BIG5,Codepage
<b>TPH</b>	150KM
<b>Auto Cutter</b>	1,000,000 cuts
<b>Print Font</b>	Font A: 12 x24
<b>Barcode</b>	1D: UPC-A, UPC-E, EAN-13, EAN-8, CODE39, ITF25, CODEBAR, CODE93, CODE128 2D: PDF417, QR CODE, DATAMATRIX
<b>Driver</b>	Windows XP/win7/Win Vista/Win8/ Win10
<b>Internal Buffer</b>	Data receive buffer : 128KB User-defined character buffer : 24KB User-defined bit images buffer : 20KB Non-volatile bit images buffer (NV bit images) : 128KB
<b>Interface</b>	USB, USB+LAN, USB+LAN+RS232, USB+LAN+VOICE, USB+LAN+Bluetooth, USB+LAN+Wi-Fi
<b>Cash drawer control</b>	DC24V,1A, 6PIN RJ-11Socket
<b>Power Supply (Adapter)</b>	24V, 2.5A
<b>Operating Temp/Humidity</b>	0-50°C/10%-80%
<b>Storage Temp/Humidity</b>	-20-60°C / 10%-90%



## PoS Tektronics Limited

Rooms 1318-19, 13 / F, Hollywood Plaza, 610 Nathan Road, Mongkok, Kowloon, Hong Kong  
pcpos@yahoo.com

[www.postektronics.com](http://www.postektronics.com)

